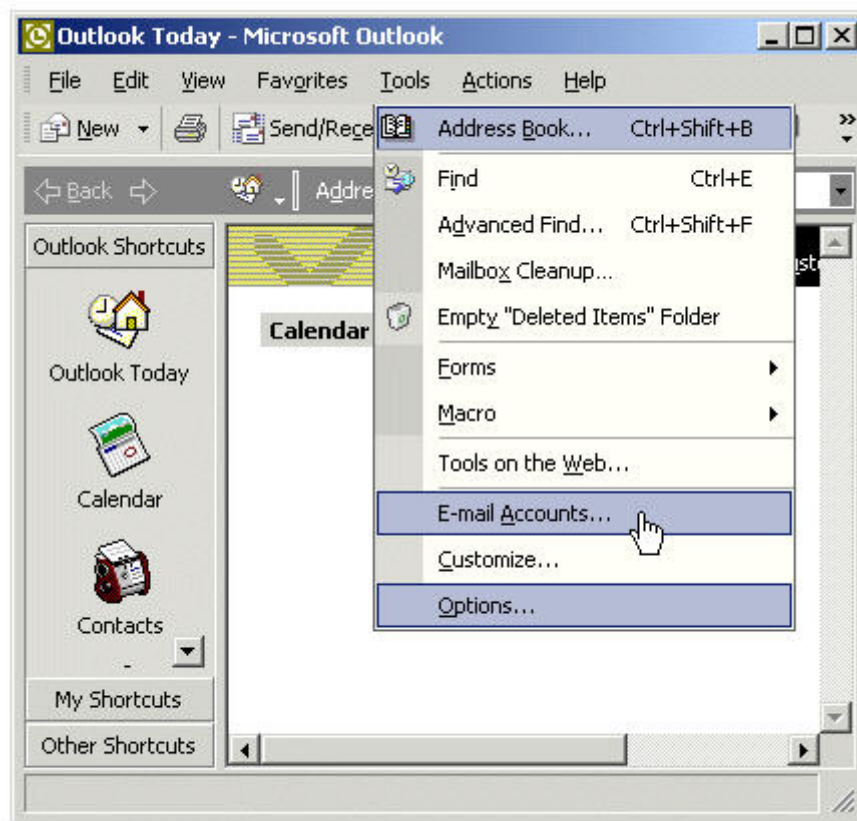


Outgoing Mail Server Authentication Setup for Outlook Express 2002 XP

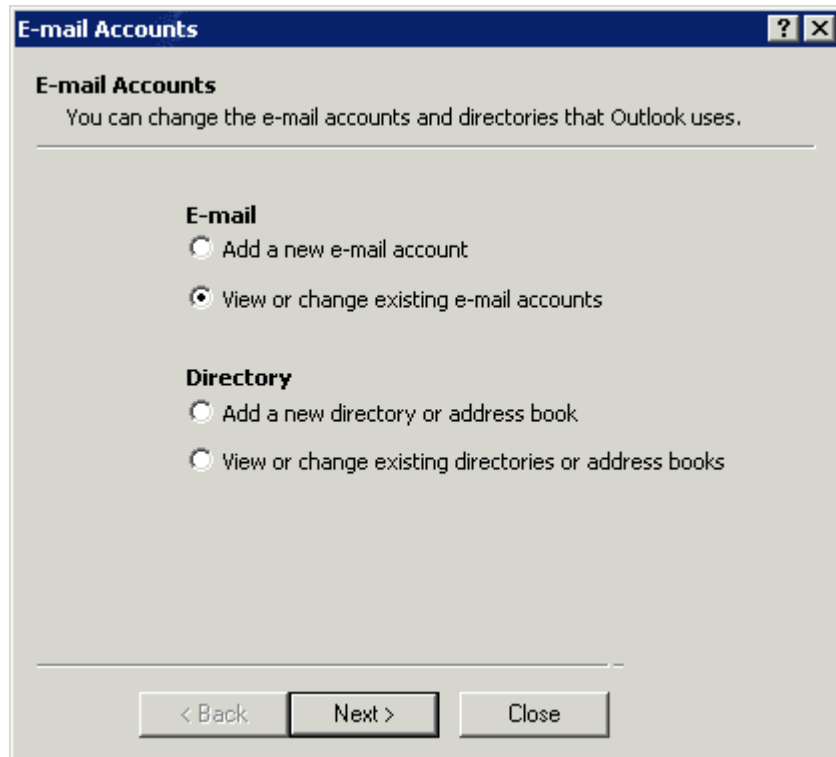
Step 1:

Open Microsoft Outlook 2002 XP. At the top click on **'Tools'** then **'Email Accounts'**.



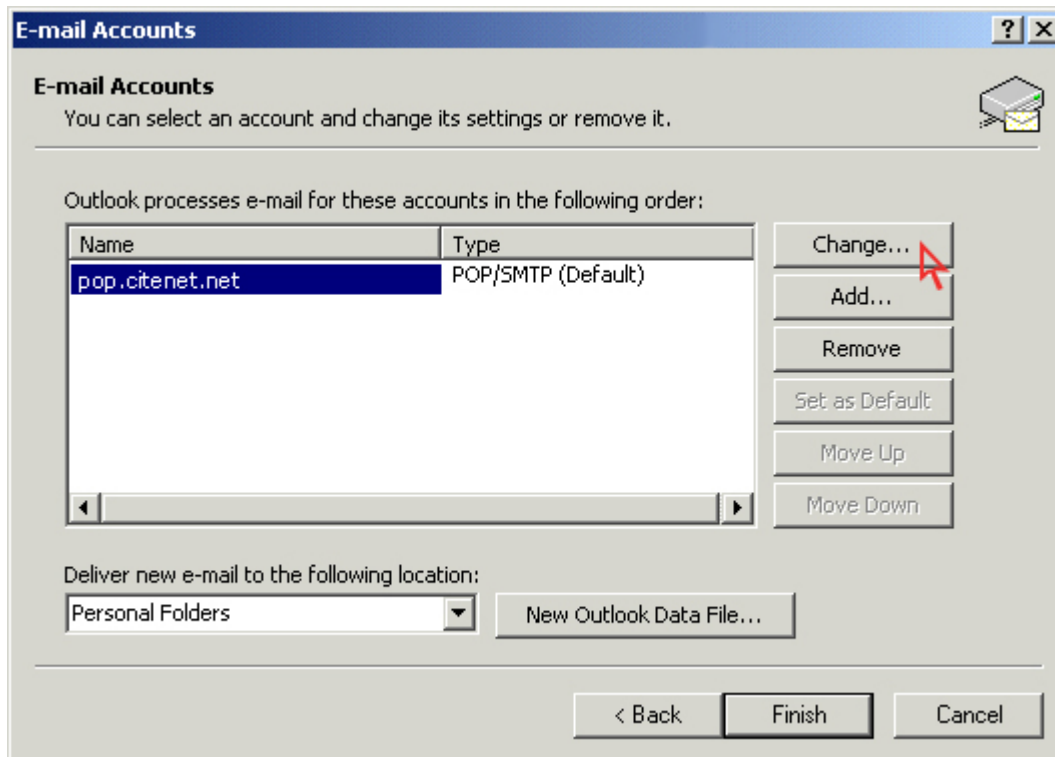
Step 2:

In the E-mail Accounts window, select '**View or change existing email accounts**' and click '**Next**'.



Step 3:

Select CitéNet Account [pop.citenet.net] and click on '**Change**'.

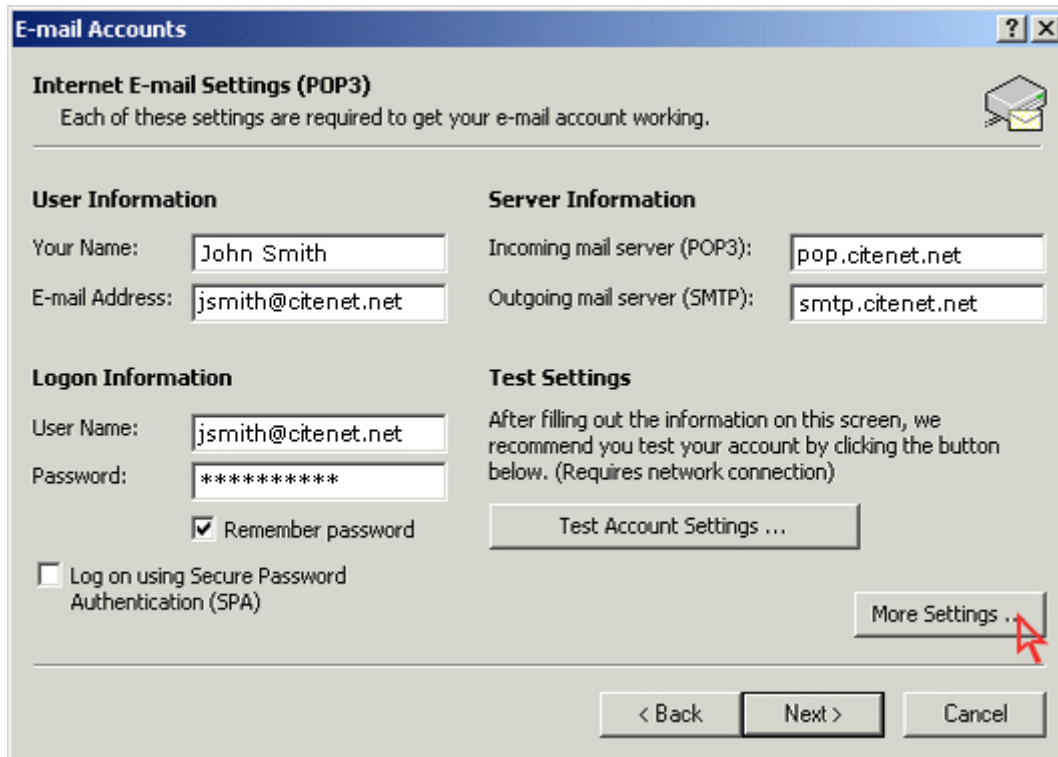


Step 4:

Under **Logon Information**, ensure your **full email address** (e.g. jsmith@citenet.net) and password appear in the **'User Name'** and **'Password'** fields.

Check off **'Remember password'**.

Click on **'More Settings'**.



The screenshot shows a Windows-style dialog box titled "E-mail Accounts" with a standard window control bar (minimize, maximize, close). The main title is "Internet E-mail Settings (POP3)" with a sub-header "Each of these settings are required to get your e-mail account working." and a small envelope icon. The dialog is divided into four sections: "User Information", "Server Information", "Logon Information", and "Test Settings".

User Information

Your Name:

E-mail Address:

Server Information

Incoming mail server (POP3):

Outgoing mail server (SMTP):

Logon Information

User Name:

Password:

Remember password

Log on using Secure Password Authentication (SPA)

Test Settings

After filling out the information on this screen, we recommend you test your account by clicking the button below. (Requires network connection)

At the bottom of the dialog are three buttons: "< Back", "Next >", and "Cancel". A red arrow points to the "More Settings ..." button.

Step 5:

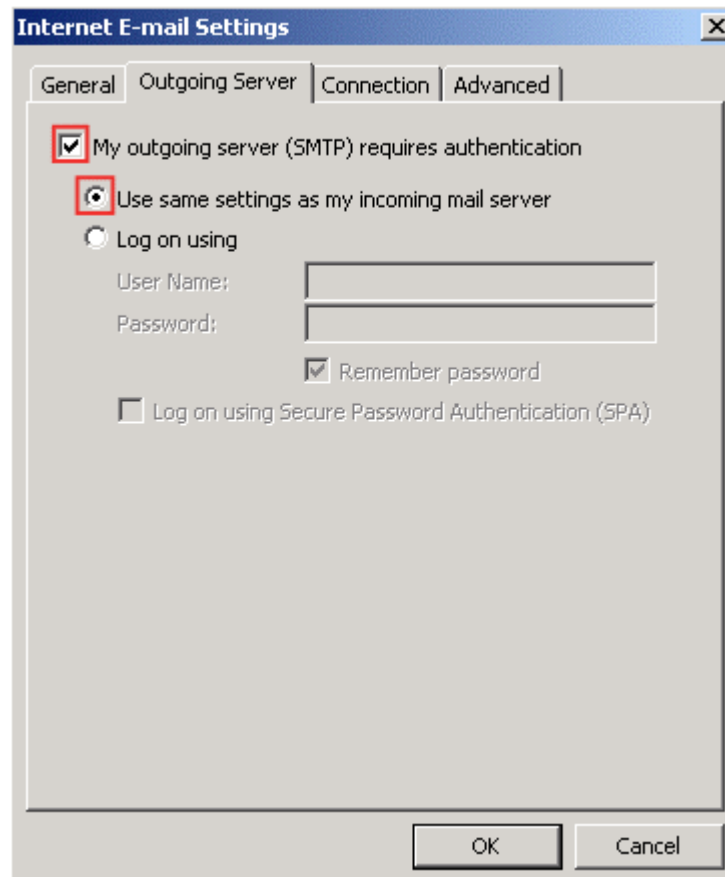
In the Internet E-mail Settings window, select the '**Outgoing Server**' tab.

Check off '**My outgoing server (SMTP) requires authentication**'.

Ensure '**Use same settings as my incoming mail server**' is selected.

This option ensures that the email address and password you entered as your logon information will be used to authenticate you when you send an email.

Select the "**Advanced**" tab.



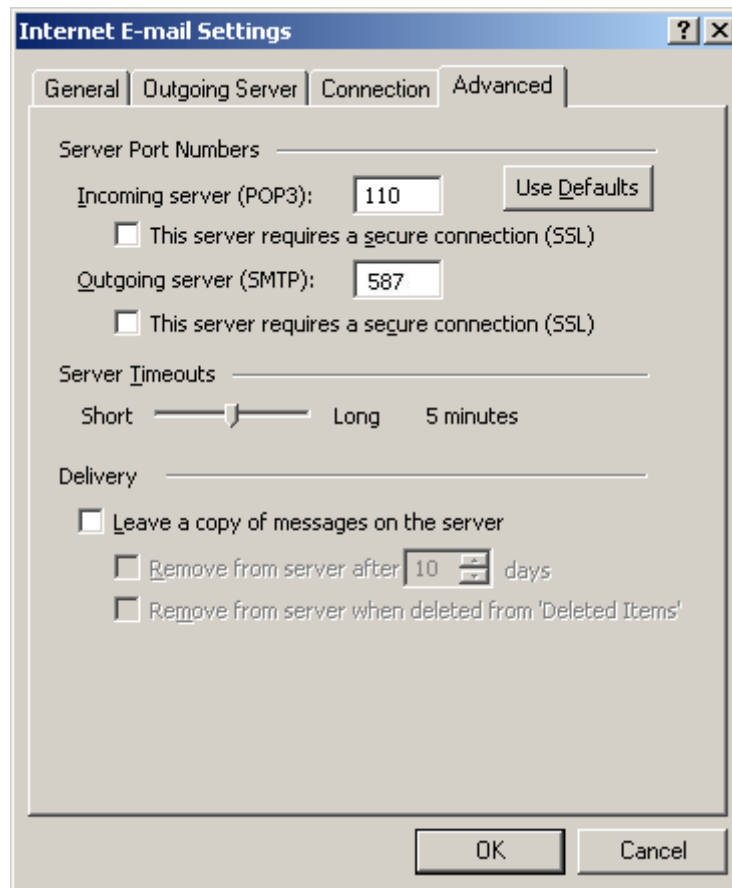
The screenshot shows the 'Internet E-mail Settings' dialog box with the 'Outgoing Server' tab selected. The 'General' tab is also visible. The 'Outgoing Server' tab contains the following options:

- My outgoing server (SMTP) requires authentication
- Use same settings as my incoming mail server
- Log on using
 - User Name:
 - Password:
 - Remember password
- Log on using Secure Password Authentication (SPA)

At the bottom of the dialog box, there are 'OK' and 'Cancel' buttons.

Step 6:

Change the **Outgoing server (SMTP)** port to **587** and Click **OK** at the bottom of the "**Internet E-mail Settings**" window.



Step 7:

Click **Finish**.