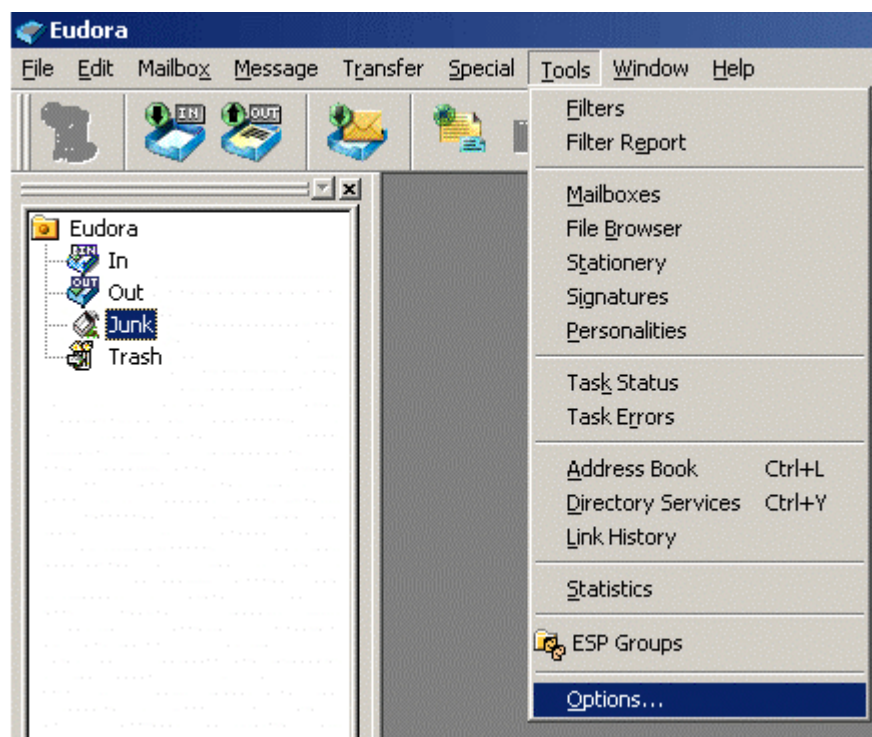


Outgoing Mail Server Authentication Setup for Eudora 6

Step 1:

Open Eudora 6. At the top click on '**Tools**' then '**Options**'.

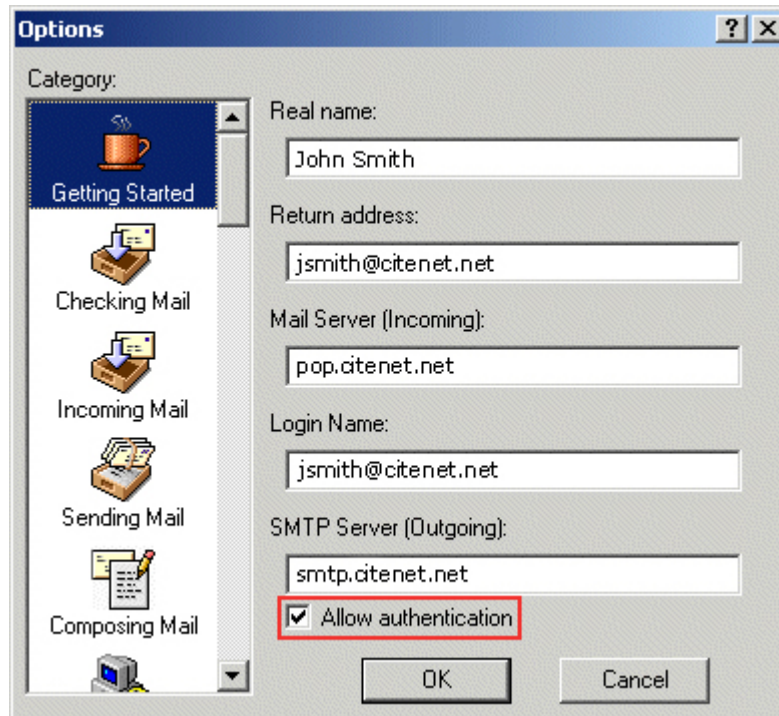


Step 2:

Click on 'Getting Started' in the left panel.

Make sure the 'Login Name' field contains your **full email address**, for example, jsmith@citenet.net

Check off 'Allow Authentication' under 'SMTP Server (Outgoing)'.



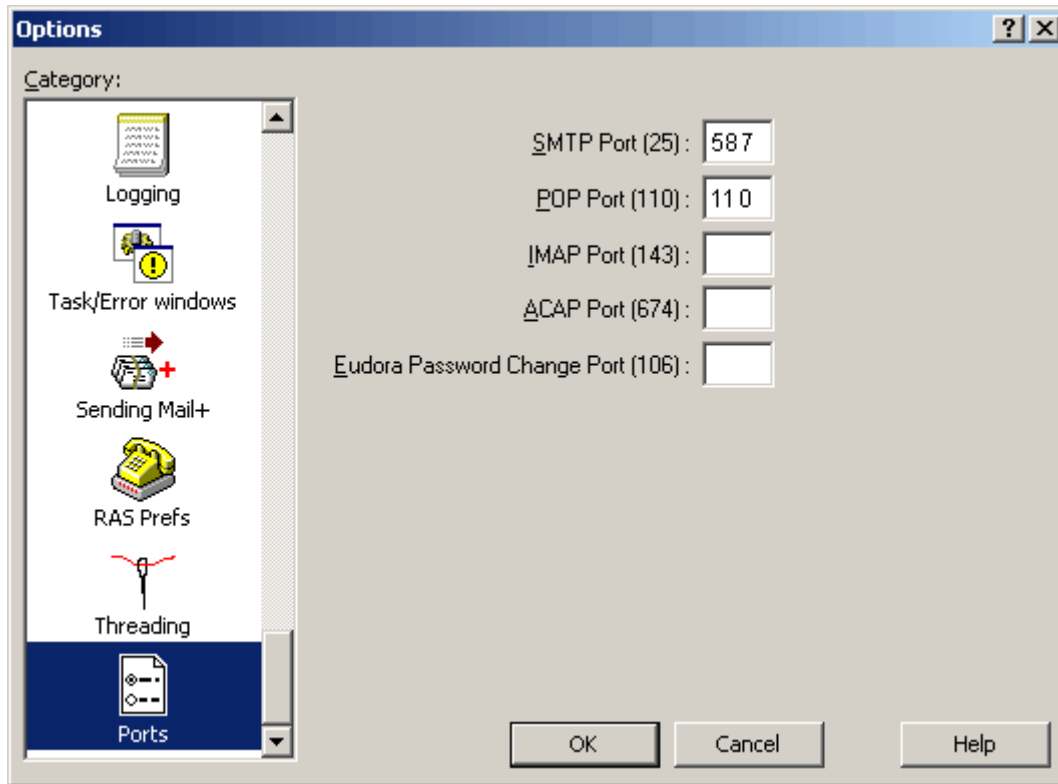
The image shows a screenshot of the 'Options' dialog box in an email client. The 'Category' list on the left includes 'Getting Started', 'Checking Mail', 'Incoming Mail', 'Sending Mail', and 'Composing Mail'. The 'Getting Started' category is selected. The main area of the dialog box contains the following fields and options:

- Real name: John Smith
- Return address: jsmith@citenet.net
- Mail Server (Incoming): pop.citenet.net
- Login Name: jsmith@citenet.net
- SMTP Server (Outgoing): smtp.citenet.net
- Allow authentication

At the bottom of the dialog box, there are 'OK' and 'Cancel' buttons.

Step 3:

Click on 'Ports' and change **Outgoing SMTP Port** to **587**



Step 4:

Click 'OK' to complete the configuration.